

Examcollection

<http://www.ipass4sure.com/examcollection.htm>



<http://www.ipass4sure.com>

156-708-70

CheckPoint

Check Point Endpoint Specialist - Media Encryption(CPEPS-ME)

<http://www.ipass4sure.com/exams.asp?examcode=156-708-70>

The 156-708-70 practice exam is written and formatted by Certified Senior IT Professionals working in today's prospering companies and data centers all over the world! The 156-708-70 Practice Test covers all the exam topics and objectives and will prepare you for success quickly and efficiently. The 156-708-70 exam is very challenging, but with our 156-708-70 questions and answers practice exam, you can feel confident in obtaining your success on the 156-708-70 exam on your FIRST TRY!

CheckPoint 156-708-70 Exam Features

- Detailed questions and answers for 156-708-70 exam
- Try a demo before buying any CheckPoint exam
- 156-708-70 questions and answers, updated regularly
- Verified 156-708-70 answers by Experts and bear almost 100% accuracy
- 156-708-70 tested and verified before publishing
- 156-708-70 examcollection vce questions with exhibits
- 156-708-70 same questions as real exam with multiple choice options

Acquiring CheckPoint certifications are becoming a huge task in the field of I.T. More over these exams like 156-708-70 exam are now continuously updating and accepting this challenge is itself a task. This 156-708-70 test is an important part of CheckPoint certifications. We have the resources to prepare you for this. The 156-708-70 exam is essential and core part of CheckPoint certifications and once you clear the exam you will be able to solve the real life problems yourself. Want to take advantage of the Real 156-708-70 Test and save time and money while developing your skills to pass your CheckPoint 156-708-70 Exam? Let us help you climb that ladder of success and pass your 156-708-70

DEMO EXAM

For Full Version visit

<http://www.ipass4sure.com/allexams.asp>

QUESTION: 1

Under what circumstances this command line procedure would be used?

- 1) osq 1. Exe -z
- 2) use disknet
- 3) updates global configuration set
- 4) go

- A. To connect to a local MSDE database installed on a machine using a Microsoft trusted application
- B. To unlock and access the Endpoint Security Media Encryption Server service.
- C. To address a blue screen issue when using Endpoint Security media Encryption and McAfee 8.5i on a Windows Vista enterprise machine.
- D. To connect to a remote SQL instance using trusted authentication

Answer: A

QUESTION: 2

Can Endpoint Security Media Encryption import Novell groups?

- A. No, Endpoint Security Media Encryption only works with Active Directory.
- B. Yes
- C. Yes. If the Novell Server is using RADIUS with LDAP
- D. No, Endpoint Security Media Encryption only uses RADIUS

Answer: B

QUESTION: 3

When you created your client install package, you entered the incorrect ME server name and now your clients cannot download their profiles. How can you update your clients to point to the correct server?

- A. Change the server name in the default profile; export the profile in .dnp format, import.dnp on the attached clients.
- B. On each client edit the registry key HELM\software\checkpoint\Encryption\Servername\ with the correct ME server name.
- C. Update the server in file on each client with the correct server name
- D. On each client, edit the registry key HKIM\software\Reflex\disknet\servername with the correct ME server name.

Answer: D

QUESTION: 4

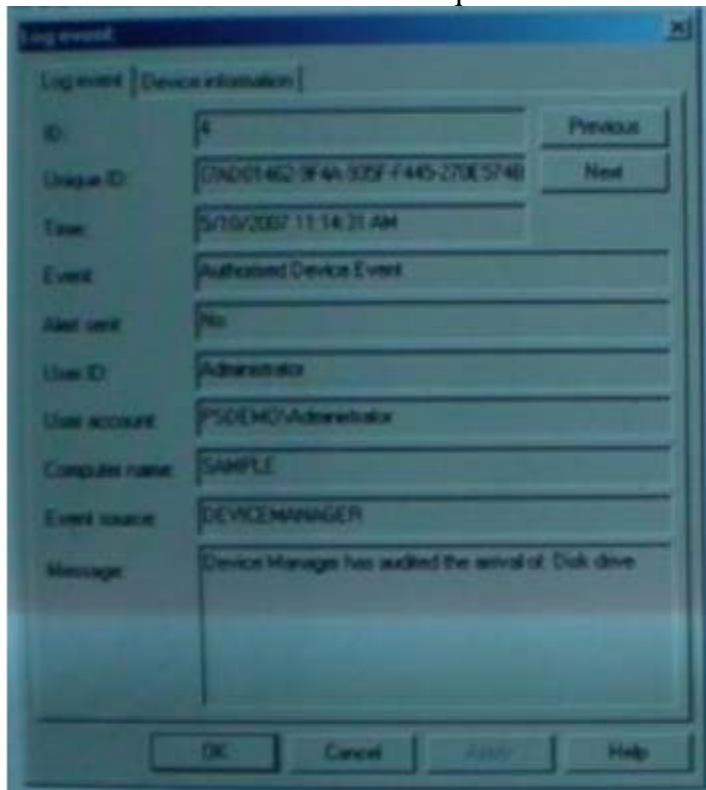
Find in the blank if no Ant-Virus Scanner or PointSec DataScan is detected on the client machine, than automatic authentication_____.

- A. Will be possible under certain restrictions.
- B. Will be possible and access will not be granted.
- C. Is initiated with administrative approval
- D. Will permit the user to authorize the device anyway

Answer: B

QUESTION: 5

Consider the following image of log event. Assume the device is frequently used, but you cannot control its use to the extent that is required. What is the most reliable solution to this dilemma?



- A. Add the device to the desktop Device Manager
- B. Create email alerts any time the device is accessed
- C. Create a media audit rule
- D. Require that the device be password encrypted

Answer: A

QUESTION: 6

There have been a security breach of your company's network and you must block clients from downloading all files with an .exe extension. What is the correct approach to resolve the issue?

- A. Create the extension in PSG, save the profile, and update all groups.
- B. Load the default profile to groups in the organization until steps are taken to remove the threat.
- C. PSG does not support executing files having other than three character extension and will therefore block the file.
- D. Select the extension in PSG, and reload the profile appropriately.

Answer: C

QUESTION: 7

Which Endpoint Security Media Encryption command controls device access on all available ports including USB and Firewall?

- A. Encryption Policy Manager
- B. Removable Media Manager
- C. Program Security Guard
- D. Device Manager

Answer: D

QUESTION: 8

During the installation of Endpoint Security Server a default profile template is created. Which of the following statements about default profile is FALSE?

- A. The default profile is used when a user connects from an endpoint Security Media Encryption Client Machine that is not in the endpoint Security Media Encryption user database.

- B. It is recommended that you modify the default profile to reflect organization policies.
- C. It is used if the server connection fails and as a fail-safe mechanism.
- D. The default profile is used as the base profile for all other profiles.

Answer: A

QUESTION: 9

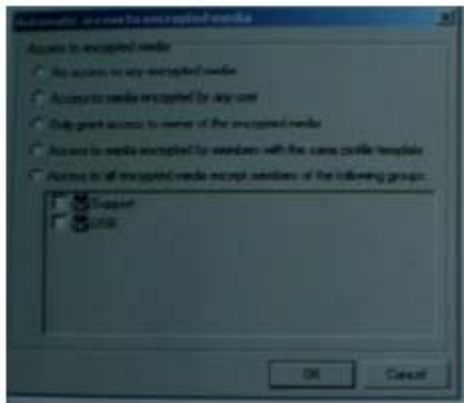
Before endpoint Security Media Encryption Server version 4.93 can run on Windows 2003 Machine, what must be installed?

- A. Endpoint Security Media Encryption ver. 4.91 HFA 1
- B. Windows 2003 server pack 1
- C. Windows 2003 server pack 2
- D. The Endpoint Security Media Encryption administration console

Answer: A

QUESTION: 10

Assuming you want specific users to have access to their encrypted media from any computer on the network, regardless of who is logged in. Which of the following screen options would you use?

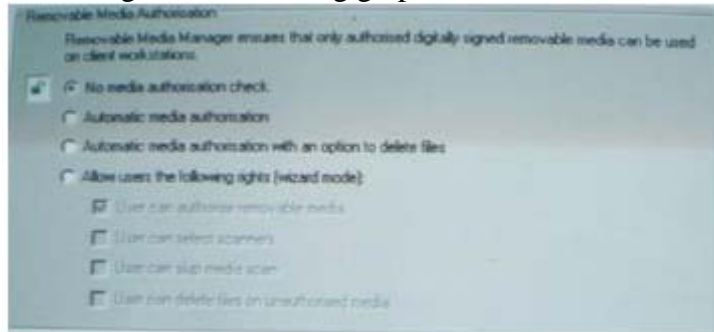


- A. Access to all encrypted media except members of the following groups.
- B. Access to media encrypted by any user
- C. Only grant access to owner of the encrypted media
- D. Access to media encrypted by members with the same profile template.

Answer: A

QUESTION: 11

According to the following graphic, what is the result of the setting?

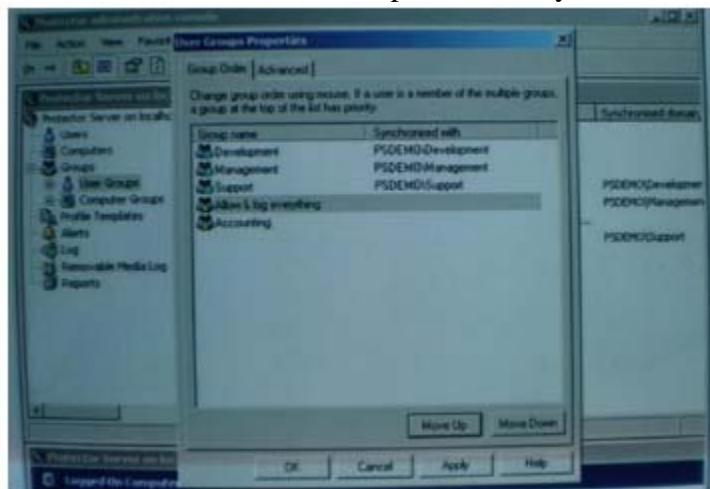


- A. Disables removableMedia Manager.
- B. Bypass user authentication but virus and data scanning still occurs
- C. Bypass Removable media manager in the current profile.
- D. Users will not be able to access certain devices listed in Device Manager

Answer: A

QUESTION: 12

Consider the following image. In this situation, the groups listed here are individually pointed to different Endpoint Security Media Encryption. You have allowed users to be members of multiple groups and user X is member of all 4 media Encryption groups. After synchronization with the AD server, which endpoint Security media Encryption group(s) inherits the user?





Pass4sure Certification Exam Features;

- Pass4sure offers over **2500** Certification exams for professionals.
- More than **98,800** Satisfied Customers Worldwide.
- Average **99.8%** Success Rate.
- Over **120** Global Certification Vendors Covered.
- Services of **Professional & Certified Experts** available via support.
- Free **90 days** updates to match real exam scenarios.
- **Instant Download Access!** No Setup required.
- Price as low as **\$19**, which is 80% more **cost effective** than others.
- **Verified answers** researched by industry experts.
- Study Material **updated** on regular basis.
- Questions / Answers are downloadable in **PDF** format.
- Mobile Device Supported (**Android, iPhone, iPod, iPad**)
- **No authorization** code required to open exam.
- **Portable** anywhere.
- **Guaranteed Success.**
- **Fast**, helpful support **24x7**.



View list of All certification exams offered;
<http://www.ipass4sure.com/all exams.asp>

View list of All Study Guides (SG);
<http://www.ipass4sure.com/study-guides.asp>

View list of All Audio Exams (AE);
<http://www.ipass4sure.com/audio-exams.asp>

Download Any Certification Exam DEMO.
<http://www.ipass4sure.com/samples.asp>

To purchase Full version of exam click below;
<http://www.ipass4sure.com/all exams.asp>

3COM	CompTIA	Filemaker	IBM	LPI	OMG	Sun
ADOBE	ComputerAssociates	Fortinet	IISFA	McAfee	Oracle	Sybase
APC	CWNP	Foundry	Intel	McData	PMI	Symantec
Apple	DELL	Fujitsu	ISACA	Microsoft	Polycom	TeraData
BEA	ECCouncil	GuidanceSoftware	ISC2	Mile2	RedHat	TIA
BICSI	EMC	HDI	ISEB	NetworkAppliance	Sair	Tibco
CheckPoint	Enterasys	Hitachi	ISM	Network-General	SASInstitute	TruSecure
Cisco	ExamExpress	HP	Juniper	Nokia	SCP	Veritas
Citrix	Exin	Huawei	Legato	Nortel	See-Beyond	Vmware
CIW	ExtremeNetworks	Hyperion	Lotus	Novell	Google	

and many others.. See complete list [Here](#)

