

# **Examcollection**

<http://www.ipass4sure.com/examcollection.htm>

# 132-S-916.2

## Avaya

*Avaya Specialist - IP Office Implement & Support Elective Exam*

<http://www.ipass4sure.com/exams.asp?examcode=132-S-916.2>

The 132-S-916.2 practice exam is written and formatted by Certified Senior IT Professionals working in today's prospering companies and data centers all over the world! The 132-S-916.2 Practice Test covers all the exam topics and objectives and will prepare you for success quickly and efficiently. The 132-S-916.2 exam is very challenging, but with our 132-S-916.2 questions and answers practice exam, you can feel confident in obtaining your success on the 132-S-916.2 exam on your FIRST TRY!

### Avaya 132-S-916.2 Exam Features

- Detailed questions and answers for 132-S-916.2 exam
- Try a demo before buying any Avaya exam
- 132-S-916.2 questions and answers, updated regularly
- Verified 132-S-916.2 answers by Experts and bear almost 100% accuracy
- 132-S-916.2 tested and verified before publishing
- 132-S-916.2 examcollection vce questions with exhibits
- 132-S-916.2 same questions as real exam with multiple choice options

Acquiring Avaya certifications are becoming a huge task in the field of I.T. More over these exams like 132-S-916.2 exam are now continuously updating and accepting this challenge is itself a task. This 132-S-916.2 test is an important part of Avaya certifications. We have the resources to prepare you for this. The 132-S-916.2 exam is essential and core part of Avaya certifications and once you clear the exam you will be able to solve the real life problems yourself. Want to take advantage of the Real 132-S-916.2 Test and save time and money while developing your skills to pass your Avaya 132-S-916.2 Exam? Let us help you climb that ladder of success and pass your 132-S-916.2 now

# **DEMO EXAM**

For Full Version visit

<http://www.ipass4sure.com/allexams.asp>

**Question: 1**

Which three options does the IMS user have available in Microsoft?Outlook? (Choose three.)

- A. Select IMS server.
- B. Select Voicemail Box.
- C. Select Voicemail server.
- D. Select handset for VM playback.
- E. Prompt before connecting to server.

**Answer: B, D, E**

**Question: 2**

An IP Office telephone user reports that a phone is not ringing for outside calls. What are three possible reasons why this is happening? (Choose three.)

- A. The IP Office locale is set to "A-Law".
- B. The phone does not have the user profile logged onto the phone.
- C. The ring volume is too low to hear.
- D. The phone has been set to "Offhook Station".
- E. The phone is set to "Do Not Disturb".

**Answer: B, C, E**

**Question: 3**

When configuring Session Initiated Protocol (SIP) trunks with SIP authorization using an IP address on an IP Office system which option must be set in the SIP Line configuration form for the trunks to function correctly?

- A. The customer's NAT IP address must be entered on the SIP line form.
- B. The Primary Authentication Name must be set.
- C. The compression mode must be set to automatic.
- D. The ITSP IP address must be entered on the SIP line form.

**Answer: D**

**Question: 4**

When installing IP Hardphones, the engineer wants to use the IEEE 802.3af standard to \_\_\_\_\_.

- A. Supply AC voltage to the IP Office
- B. Supply power to the IP Hardphones
- C. Perform Layer 3 routing for IP Hardphones
- D. Filter multicast traffic to the appropriate IP Hardphone

**Answer: B**

**Question: 5**

Recordings take up how much space on a hard drive?

- A. 2MB per minute
- B. 200KB per minute
- C. 1MB per minute
- D. 650KB per minute

**Answer: C**

**Question: 6**

Which three pieces of information does System Status Application provide? (Choose three.)

- A. Configuration errors
- B. Local IP Office license status
- C. Trunk status
- D. Extension status
- E. Remote IP Office license statu

**Answer: B, C, D**

**Question: 7**

A customer wants to have a simple conference bridge with four permanent bridges set up off of a menu in VoiceMail Pro. The customer also wants each bridge protected with a different static PIN. Where in the setup of this scenario would you enter the PIN?

- A. On the General tab in the menu action
- B. On the General tab for each transfer action
- C. On the Telephone Number field in the IP Office Short Code
- D. In the Properties box for each option in the Touch Tone tab in the menu action

**Answer: B**

**Question: 8**

Which Dynamic Host Configuration Protocol (DHCP) options are available in the IP Office?

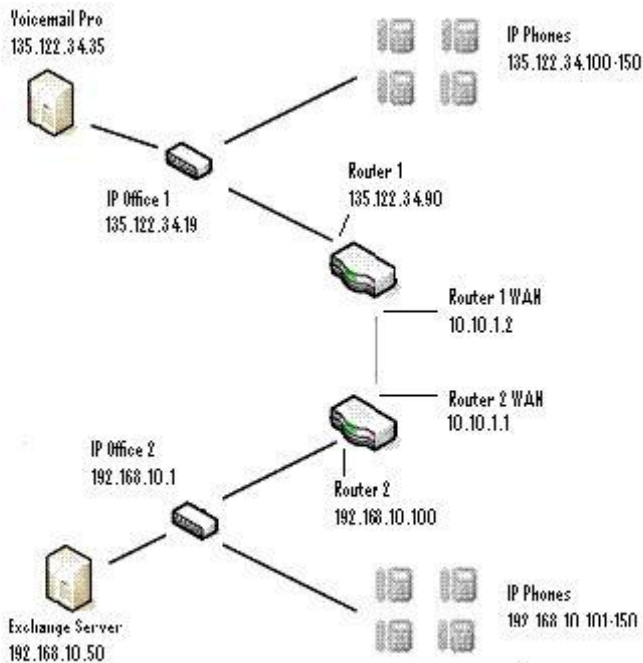
- A. Disabled, Enabled
- B. Server, Enabled, Client
- C. Server, Disabled, Client, DialIn
- D. Server, Client, Disabled

**Answer: C**

**Question: 9**

Click the Exhibit button.

In the exhibit, what would the default gateway for IP Office 1 be?



- A. 10.10.1.1
- B. 10.10.1.2
- C. 192.168.10.100
- D. 135.122.34.90

**Answer: D**

**Question: 10**

Which file validates the version of software that is to be loaded into the 4600 Series Telephone set?

- A. bbla0\_83.scr
- B. 46xxsettings.txt
- C. 46xxsettings.scr
- D. 46xxupgrade.scr

**Answer: D**

**Question: 11**

What is necessary to upgrade the firmware for the 4600/5600 series sets on an IP Office system?

- A. Manager
- B. Serial cable
- C. Third-party FTP server
- D. Null modem cable

**Answer: A**

**Question: 12**

Which two operating systems are supported by VoiceMail Pro? (Choose two.)



## Pass4sure Certification Exam Features;

- Pass4sure offers over **2500** Certification exams for professionals.
- More than **98,800** Satisfied Customers Worldwide.
- Average **99.8%** Success Rate.
- Over **120** Global Certification Vendors Covered.
- Services of **Professional & Certified Experts** available via support.
- Free **90 days** updates to match real exam scenarios.
- **Instant Download Access!** No Setup required.
- Price as low as **\$19**, which is 80% more **cost effective** than others.
- **Verified answers** researched by industry experts.
- Study Material **updated** on regular basis.
- Questions / Answers are downloadable in **PDF** format.
- Mobile Device Supported (**Android, iPhone, iPod, iPad**)
- **No authorization** code required to open exam.
- **Portable** anywhere.
- **Guaranteed Success.**
- **Fast**, helpful support **24x7**.



View list of All certification exams offered;  
<http://www.ipass4sure.com/all exams.asp>

View list of All Study Guides (SG);  
<http://www.ipass4sure.com/study-guides.asp>

View list of All Audio Exams (AE);  
<http://www.ipass4sure.com/audio-exams.asp>

Download Any Certification Exam DEMO.  
<http://www.ipass4sure.com/samples.asp>

To purchase Full version of exam click below;  
<http://www.ipass4sure.com/all exams.asp>

3COM	CompTIA	Filemaker	IBM	LPI	OMG	Sun
ADOBE	ComputerAssociates	Fortinet	IISFA	McAfee	Oracle	Sybase
APC	CWNP	Foundry	Intel	McData	PMI	Symantec
Apple	DELL	Fujitsu	ISACA	Microsoft	Polycom	TeraData
BEA	ECCouncil	GuidanceSoftware	ISC2	Mile2	RedHat	TIA
BICSI	EMC	HDI	ISEB	NetworkAppliance	Sair	Tibco
CheckPoint	Enterasys	Hitachi	ISM	Network-General	SASInstitute	TruSecure
Cisco	ExamExpress	HP	Juniper	Nokia	SCP	Veritas
Citrix	Exin	Huawei	Legato	Nortel	See-Beyond	Vmware
CIW	ExtremeNetworks	Hyperion	Lotus	Novell	Google	

and many others.. See complete list [Here](#)

