

Examcollection

<http://www.ipass4sure.com/examcollection.htm>

050-895

Novell

*Novell eDirectory Design and Implementation : eDirectory
8.8*

<http://www.ipass4sure.com/exams.asp?examcode=050-895>

The 050-895 practice exam is written and formatted by Certified Senior IT Professionals working in today's prospering companies and data centers all over the world! The 050-895 Practice Test covers all the exam topics and objectives and will prepare you for success quickly and efficiently. The 050-895 exam is very challenging, but with our 050-895 questions and answers practice exam, you can feel confident in obtaining your success on the 050-895 exam on your FIRST TRY!

Novell 050-895 Exam Features

- Detailed questions and answers for 050-895 exam
- Try a demo before buying any Novell exam
- 050-895 questions and answers, updated regularly
- Verified 050-895 answers by Experts and bear almost 100% accuracy
- 050-895 tested and verified before publishing
- 050-895 examcollection vce questions with exhibits
- 050-895 same questions as real exam with multiple choice options

Acquiring Novell certifications are becoming a huge task in the field of I.T. More over these exams like 050-895 exam are now continuously updating and accepting this challenge is itself a task. This 050-895 test is an important part of Novell certifications. We have the resources to prepare you for this. The 050-895 exam is essential and core part of Novell certifications and once you clear the exam you will be able to solve the real life problems yourself. Want to take advantage of the Real 050-895 Test and save time and money while developing your skills to pass your Novell 050-895 Exam? Let us help you climb that ladder of success and pass your 050-895 now!

DEMO EXAM

For Full Version visit

<http://www.ipass4sure.com/allexams.asp>

Question: 1

Which replica type contains only the partition root object?

- A - Master
- B - Read-only
- C - Read/Write
- D - Filtered replica
- E - Subordinate reference

Answer: E

Question: 2

Which statements are true regarding the placement of eDirectory objects? (Choose 2.)

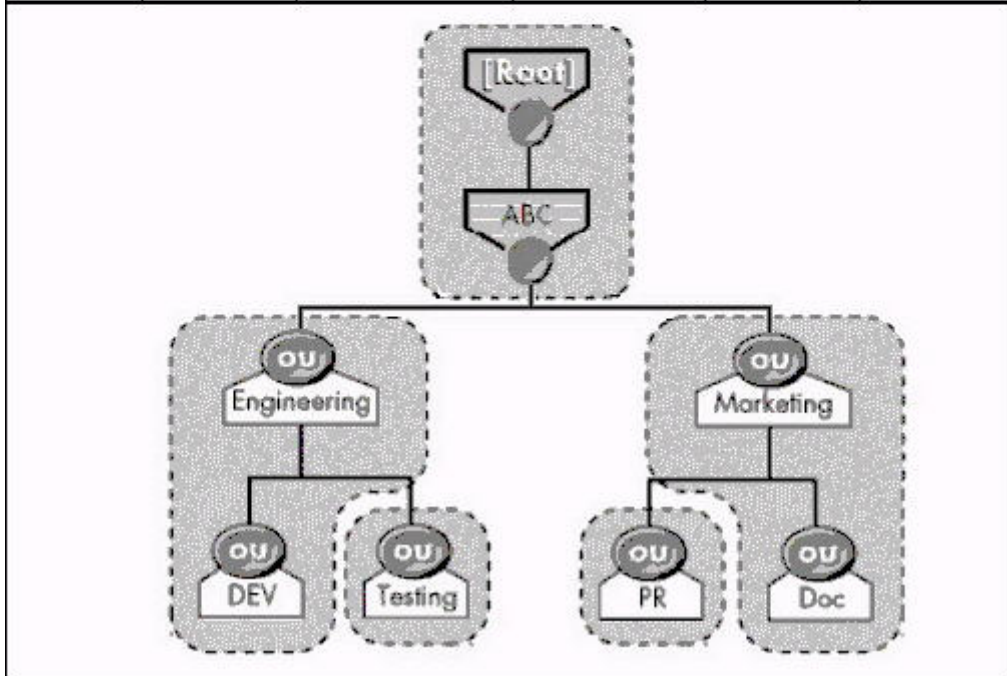
- A - Place application objects in their own container.
- B - Don't place user objects near the top of the tree.
- C - If possible, don't place objects deep within a tree.
- D - If possible, don't place server objects within the same container.
- E - Server objects should be placed near the user objects they are servicing.

Answer: C, E

Question: 3

Exhibit:

Server	[Root]	Engineering	Marketing	Testing	PR
Serv1	Master	Master	Master	Master	Master
Serv2	R/W		R/W		
Serv3		R/W		R/W	
Serv4	R/W				R/W
Serv5	R/W		R/W		
Serv6	R/W	R/W			



How many subordinate references will exist in this tree?

- A - 3
- B - 5
- C - 6
- D - 7
- E - 8
- F - 9
- G - 12

Answer: E

Question: 4

Which of the following is most important to consider when designing the upper layers of an eDirectory tree?

- A - Time synchronization strategy

- B - Number of objects in the tree
- C - Number of servers in the tree
- D - Physical network infrastructure
- E - Number of partitions and replicas

Answer: D

Question: 5

What is the most important design consideration when designing the upper layers of an eDirectory tree?

- A - Partition and replica plan
- B - Time synchronization strategy
- C - Number of objects in the tree
- D - Number of servers in the tree
- E - Physical network infrastructure

Answer: E

Question: 6

What is a part of analyzing user needs when creating an accessibility needs analysis document?

- A - Design a strategy for mobile users.
- B - Specify ZENworks object configurations.
- C - Specify security rights to particular objects.
- D - Gather information related to physical network resource needs.
- E - Create guidelines that determine how eDirectory objects are used to create the user environment.

Answer: D

Question: 7

What tasks are helpful in completing a needs analysis when designing an eDirectory tree? (Choose 2.)

- A - Gather information about network connectivity
- B - Gather information about resources that users access
- C - Gather information to decide on a replica placement strategy
- D - Gather information to estimate the time for each phase of design
- E - Gather information to decide which server should be the time provider

Answer: A, B

Question: 8

Which statement is true about eDirectory partitions?

- A - Partitions can overlap each other.
- B - A container object can reside in 2 partitions.
- C - A partition provides fault tolerance for the file system.
- D - Partitions are logical divisions of eDirectory that enable the database to be divided among several servers.

Answer: D

Question: 9



Pass4sure Certification Exam Features;

- Pass4sure offers over **2500** Certification exams for professionals.
- More than **98,800** Satisfied Customers Worldwide.
- Average **99.8%** Success Rate.
- Over **120** Global Certification Vendors Covered.
- Services of **Professional & Certified Experts** available via support.
- Free **90 days** updates to match real exam scenarios.
- **Instant Download Access!** No Setup required.
- Price as low as **\$19**, which is 80% more **cost effective** than others.
- **Verified answers** researched by industry experts.
- Study Material **updated** on regular basis.
- Questions / Answers are downloadable in **PDF** format.
- Mobile Device Supported (**Android, iPhone, iPod, iPad**)
- **No authorization** code required to open exam.
- **Portable** anywhere.
- **Guaranteed Success.**
- **Fast**, helpful support **24x7**.



View list of All certification exams offered;
<http://www.ipass4sure.com/all exams.asp>

View list of All Study Guides (SG);
<http://www.ipass4sure.com/study-guides.asp>

View list of All Audio Exams (AE);
<http://www.ipass4sure.com/audio-exams.asp>

Download Any Certification Exam DEMO.
<http://www.ipass4sure.com/samples.asp>

To purchase Full version of exam click below;
<http://www.ipass4sure.com/all exams.asp>

3COM	CompTIA	Filemaker	IBM	LPI	OMG	Sun
ADOBE	ComputerAssociates	Fortinet	IISFA	McAfee	Oracle	Sybase
APC	CWNP	Foundry	Intel	McData	PMI	Symantec
Apple	DELL	Fujitsu	ISACA	Microsoft	Polycom	TeraData
BEA	ECCouncil	GuidanceSoftware	ISC2	Mile2	RedHat	TIA
BICSI	EMC	HDI	ISEB	NetworkAppliance	Sair	Tibco
CheckPoint	Enterasys	Hitachi	ISM	Network-General	SASInstitute	TruSecure
Cisco	ExamExpress	HP	Juniper	Nokia	SCP	Veritas
Citrix	Exin	Huawei	Legato	Nortel	See-Beyond	Vmware
CIW	ExtremeNetworks	Hyperion	Lotus	Novell	Google	

and many others.. See complete list [Here](#)

