

# **Examcollection**

<http://www.ipass4sure.com/examcollection.htm>



<http://www.ipass4sure.com>

# 050-701

## Novell

*Upgrading to Novell Open Enterprise Server for NetWare*

<http://www.ipass4sure.com/exams.asp?examcode=050-701>

The 050-701 practice exam is written and formatted by Certified Senior IT Professionals working in today's prospering companies and data centers all over the world! The 050-701 Practice Test covers all the exam topics and objectives and will prepare you for success quickly and efficiently. The 050-701 exam is very challenging, but with our 050-701 questions and answers practice exam, you can feel confident in obtaining your success on the 050-701 exam on your FIRST TRY!

### Novell 050-701 Exam Features

- Detailed questions and answers for 050-701 exam
- Try a demo before buying any Novell exam
- 050-701 questions and answers, updated regularly
- Verified 050-701 answers by Experts and bear almost 100% accuracy
- 050-701 tested and verified before publishing
- 050-701 examcollection vce questions with exhibits
- 050-701 same questions as real exam with multiple choice options

Acquiring Novell certifications are becoming a huge task in the field of I.T. More over these exams like 050-701 exam are now continuously updating and accepting this challenge is itself a task. This 050-701 test is an important part of Novell certifications. We have the resources to prepare you for this. The 050-701 exam is essential and core part of Novell certifications and once you clear the exam you will be able to solve the real life problems yourself. Want to take advantage of the Real 050-701 Test and save time and money while developing your skills to pass your Novell 050-701 Exam? Let us help you climb that ladder of success and pass your 050-701 now!

# **DEMO EXAM**

For Full Version visit

<http://www.ipass4sure.com/allexams.asp>

**Question: 1**

After upgrading a NetWare 5.1 server to OES NetWare, you can't mount volume DATA. Given that DATA is an NSS volume, which command will fix the problem?

- A. LOAD NW51.NSS
- B. LOAD ZLSS.NSS
- C. VCU DATA DATA2
- D. VOLMN DATA DATA2
- E. NSS /NW51VOLUMEUPGRADE=ON
- F. NSS /ZLSSVOLUMEUPGRADE=ALL
- G. NSS /NW51VOLUMEUPGRADE=ALL

**Answer: F**

**Question: 2**

Distributed File Services uses \_\_\_\_\_, which allows volumes to be joined together such that they appear as subdirectories in one file system. Answer:

- A. JUNCTIONS

**Answer: A**

**Question: 3**

Which products are installed during a Management Server patterned deployment? (Choose 2.)

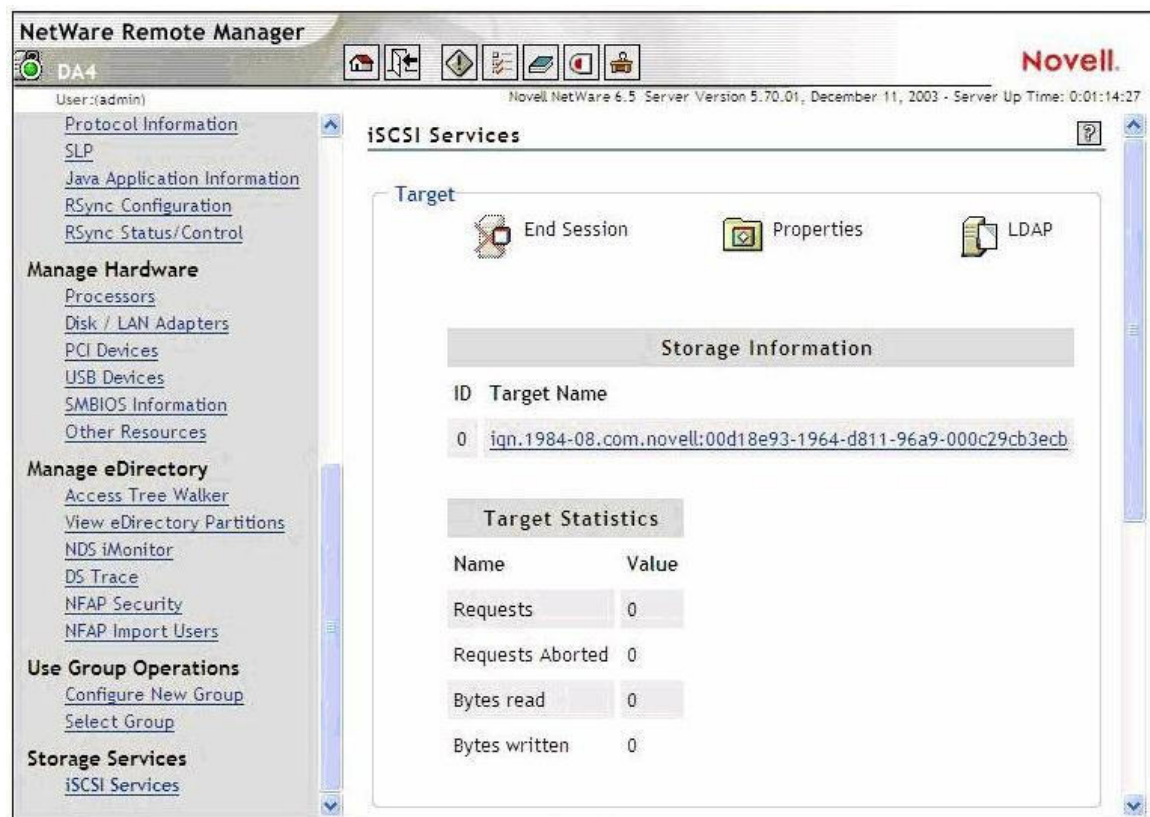
- A. iSCSI
- B. eGuide
- C. OpenSSH
- D. iFolder
- E. iManager
- F. Virtual Office

**Answer: B, E**

**Question: 4**

Click the Exhibit button to begin.

If you wanted to connect to the iSCSI target displayed in the exhibit, what command would you enter at the iSCSI initiator server console? The IP address of the target is 10.0.0.4.



- A. ISCSIINIT CONNECT 10.0.0.4 DA4
- B. ISCSIINIT CONNECT TARGET=10.0.0.4
- C. ISCSIINIT 10.0.0.4 iqn.1984-08.com.novell:00d18e93-1964-d811-96a9-000c29cb3ecb
- D. ISCSIINIT CONNECT 10.0.0.4 iqn.1984-08.com.novell:00d18e93-1964-d811-96a9-000c29cb3ecb
- E. ISCSIINIT CONNECT iqn.1984-08.com.novell:00d18e93-1964-d811-96a9-000c29cb3ecb 10.0.0.4
- F. ISCSIINIT CONNECT TARGET=10.0.0.4 NAME=iqn.1984-08.com.novell:00d18e93-1964-d811-96a9-000c29cb3ecb

**Answer: D**

**Question: 5**

You have configured a DFS Management Context with the VLDB service running on DA1. In the SHARED directory on DA1's DATA volume, you created a junction to the root of the VOL1 volume on DA2. You then created a CIFS share for the SHARED directory and granted the appropriate rights to your user and group objects to access the directory. When users access the junction from their Windows 2000 Professional workstations without the Novell Client installed, it fails to take them to VOL1 on DA2. Which is the resolution to this problem?

- A. Load VLDB.NLM on DA2.
- B. Add a VLDB replica to DA2.
- C. Enable DFS support for CIFS clients.
- D. Upgrade the workstations to Windows XP Home or Professional.
- E. Run the VERIFY utility to check the integrity of the pool where VOL1 resides on DA2.

**Answer: C**

**Question: 6**

A volume on your OES NetWare server has a security label of Password and Token. A user in your tree has logged in using an eDirectory password and a smart card, granting him a clearance with a Read label of Password and Token and a Write label of Password and Token. What level of access does the user have to the volume?

- A. No access
- B. Read only access
- C. Write only access
- D. Read and Write access

**Answer: D**

**Question: 7**

When accessing iManager 2.5, you authenticate as AHammer.BERLIN.EMA. The roles you need are not displayed. How can you fix this problem?

- A. Restart Tomcat on the server.
- B. Restart Apache Web Server on the server.
- C. Delete all existing roles and then manually rebuild them.
- D. Close the browser window, then reauthenticate as AHammer.
- E. Check the Tomcat configuration file to make sure iManager has been configured correctly.
- F. Authenticate as admin to iManager and assign the missing roles to the AHammer user object.

**Answer: F**

**Question: 8**

How do you perform a Down-Server Upgrade?

- A. Use iManager 2.0 or later to complete the upgrade from a workstation.
- B. Use NetWare Deployment Manager to complete the upgrade from a workstation.
- C. Mount the OES NetWare Operating System CD; then select Novell > Install to begin the upgrade.
- D. Boot the server from the OES NetWare Operating System CD and manually execute INSTALL.BAT with the /UPGRADE switch.

**Answer: D**

**Question: 9**

On an OES NetWare server, you must restart the Tomcat service after installing a new iManager plug-in. How can you do this?

- A. At the server console, enter TC4RESTART.
- B. At the server console, enter TC4 /RESTART.
- C. At the server console, enter TOMCAT -RESTART.
- D. At the server console, enter TC4STOP; then enter TOMCAT4.
- E. At the server console, enter TOMCAT /STOP; then enter TOMCAT /START.

**Answer: D**

**Question: 10**

Which OES NetWare component enables script-based management of the network?

- A. NXBit Support



## Pass4sure Certification Exam Features;

- Pass4sure offers over **2500** Certification exams for professionals.
- More than **98,800** Satisfied Customers Worldwide.
- Average **99.8%** Success Rate.
- Over **120** Global Certification Vendors Covered.
- Services of **Professional & Certified Experts** available via support.
- Free **90 days** updates to match real exam scenarios.
- **Instant Download Access!** No Setup required.
- Price as low as **\$19**, which is 80% more **cost effective** than others.
- **Verified answers** researched by industry experts.
- Study Material **updated** on regular basis.
- Questions / Answers are downloadable in **PDF** format.
- Mobile Device Supported (**Android, iPhone, iPod, iPad**)
- **No authorization** code required to open exam.
- **Portable** anywhere.
- **Guaranteed Success.**
- **Fast**, helpful support **24x7**.

View list of All certification exams offered;  
<http://www.ipass4sure.com/allexams.asp>

View list of All Study Guides (SG);  
<http://www.ipass4sure.com/study-guides.asp>

View list of All Audio Exams (AE);  
<http://www.ipass4sure.com/audio-exams.asp>

Download Any Certification Exam DEMO.  
<http://www.ipass4sure.com/samples.asp>

To purchase Full version of exam click below;  
<http://www.ipass4sure.com/allexams.asp>

3COM	CompTIA	Filemaker	IBM	LPI	OMG	Sun
ADOBE	ComputerAssociates	Fortinet	IISFA	McAfee	Oracle	Sybase
APC	CWNP	Foundry	Intel	McData	PMI	Symantec
Apple	DELL	Fujitsu	ISACA	Microsoft	Polycom	TeraData
BEA	ECCouncil	GuidanceSoftware	ISC2	Mile2	RedHat	TIA
BICSI	EMC	HDI	ISEB	NetworkAppliance	Sair	Tibco
CheckPoint	Enterasys	Hitachi	ISM	Network-General	SASInstitute	TruSecure
Cisco	ExamExpress	HP	Juniper	Nokia	SCP	Veritas
Citrix	Exin	Huawei	Legato	Nortel	See-Beyond	Vmware
CIW	ExtremeNetworks	Hyperion	Lotus	Novell	Google	

and many others.. See complete list [Here](#)

