

Examcollection

<http://www.ipass4sure.com/examcollection.htm>



<http://www.ipass4sure.com>

050-695

Novell

*Novell eDirectory Design and Implementation :eDirectory
8.8*

<http://www.ipass4sure.com/exams.asp?examcode=050-695>

The 050-695 practice exam is written and formatted by Certified Senior IT Professionals working in today's prospering companies and data centers all over the world! The 050-695 Practice Test covers all the exam topics and objectives and will prepare you for success quickly and efficiently. The 050-695 exam is very challenging, but with our 050-695 questions and answers practice exam, you can feel confident in obtaining your success on the 050-695 exam on your FIRST TRY!

Novell 050-695 Exam Features

- Detailed questions and answers for 050-695 exam
- Try a demo before buying any Novell exam
- 050-695 questions and answers, updated regularly
- Verified 050-695 answers by Experts and bear almost 100% accuracy
- 050-695 tested and verified before publishing
- 050-695 examcollection vce questions with exhibits
- 050-695 same questions as real exam with multiple choice options

Acquiring Novell certifications are becoming a huge task in the field of I.T. More over these exams like 050-695 exam are now continuously updating and accepting this challenge is itself a task. This 050-695 test is an important part of Novell certifications. We have the resources to prepare you for this. The 050-695 exam is essential and core part of Novell certifications and once you clear the exam you will be able to solve the real life problems yourself. Want to take advantage of the Real 050-695 Test and save time and money while developing your skills to pass your Novell 050-695 Exam? Let us help you climb that ladder of success and pass your 050-695 now!

DEMO EXAM

For Full Version visit

<http://www.ipass4sure.com/allexams.asp>

QUESTION 1:

Which protocol allows users on TCP/IP networks to dynamically discover available network services?

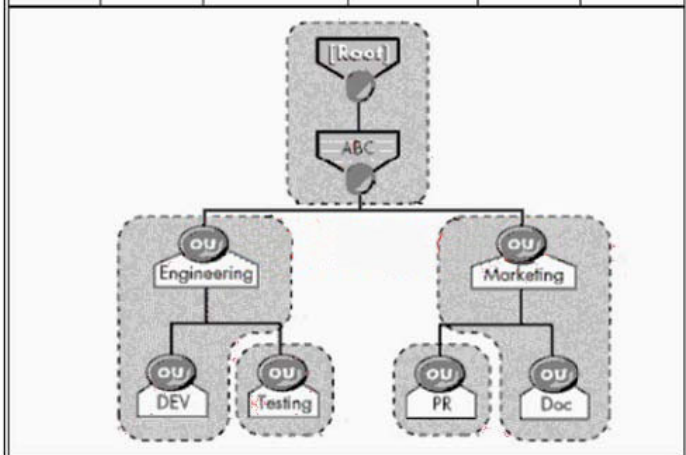
- A. NTP
- B. DHCP
- C. SLP
- D. RIP
- E. SAP

Answer: C

QUESTION 2:

Shown in the exhibit is a Partition and Replica table along with a partitioned eDirectory tree. Which servers automatically receive a subordinate reference of the Testing partition?

Server	[Root]	Engineering	Marketing	Testing	PR
CertKiller1	Master	Master	Master	Master	Master
CertKiller2	R/W	R/W			
CertKiller3			R/W		
CertKiller4		R/W			
CertKiller5	R/W		R/W		
CertKiller6	R/W	R/W	R/W		



- A. Certkiller 3, Certkiller 5, and Certkiller 6
- B. Certkiller 2, Certkiller 3, Certkiller 4, Certkiller 5, and Certkiller 6
- C. Certkiller 2, Certkiller 5, and Certkiller 6
- D. Certkiller 2, Certkiller 4, Certkiller 5, and Certkiller 6
- E. Certkiller 2, Certkiller 4, and Certkiller 6

Answer: E

QUESTION 3:

What is a good recommendation to follow when designing partitions for upper layers in the tree?

- A. Place all servers, including servers at different locations, in the same partition.
- B. Always partition upper layers locally.
- C. Partition the Directory by function regardless of location.
- D. Use organizational divisions, departments, workgroups, and their associated resources, to define upper-layer partitions.
- E. Design your partition structure with fewer partitions at the top of the tree and more partitions as you move toward the bottom.

Answer: E

QUESTION 4:

Which are characteristics of the Service Agent (SA) when referring to the Service Location Protocol? (Choose 2.)

- A. SAs request service locations from the User Agent (UA).
- B. Directory Agents request service locations from SAs.
- C. SAs maintain a record of all services advertised by the Directory Agent (DA).
- D. Network servers load SAs by default.
- E. SAs are primarily intended for smaller networks.

Answer: D,E

QUESTION 5:

What is a good recommendation to follow when designing partitions for lower layers in the tree?

- A. Partition the Directory with more partitions at the top and fewer partitions at lower-levels.
- B. Place all servers, including servers at different locations, in the same partition.
- C. Create a partition for each container.
- D. Use organizational divisions and workgroups to define lower-level partitions.
- E. Partition the Directory by function regardless of location.

Answer: D



Pass4sure Certification Exam Features;

- Pass4sure offers over **2500** Certification exams for professionals.
- More than **98,800** Satisfied Customers Worldwide.
- Average **99.8%** Success Rate.
- Over **120** Global Certification Vendors Covered.
- Services of **Professional & Certified Experts** available via support.
- Free **90 days** updates to match real exam scenarios.
- **Instant Download Access!** No Setup required.
- Price as low as **\$19**, which is 80% more **cost effective** than others.
- **Verified answers** researched by industry experts.
- Study Material **updated** on regular basis.
- Questions / Answers are downloadable in **PDF** format.
- Mobile Device Supported (**Android, iPhone, iPod, iPad**)
- **No authorization** code required to open exam.
- **Portable** anywhere.
- **Guaranteed Success.**
- **Fast**, helpful support **24x7**.



View list of All certification exams offered;
<http://www.ipass4sure.com/all exams.asp>

View list of All Study Guides (SG);
<http://www.ipass4sure.com/study-guides.asp>

View list of All Audio Exams (AE);
<http://www.ipass4sure.com/audio-exams.asp>

Download Any Certification Exam DEMO.
<http://www.ipass4sure.com/samples.asp>

To purchase Full version of exam click below;
<http://www.ipass4sure.com/all exams.asp>

3COM	CompTIA	Filemaker	IBM	LPI	OMG	Sun
ADOBE	ComputerAssociates	Fortinet	IISFA	McAfee	Oracle	Sybase
APC	CWNP	Foundry	Intel	McData	PMI	Symantec
Apple	DELL	Fujitsu	ISACA	Microsoft	Polycom	TeraData
BEA	ECCouncil	GuidanceSoftware	ISC2	Mile2	RedHat	TIA
BICSI	EMC	HDI	ISEB	NetworkAppliance	Sair	Tibco
CheckPoint	Enterasys	Hitachi	ISM	Network-General	SASInstitute	TruSecure
Cisco	ExamExpress	HP	Juniper	Nokia	SCP	Veritas
Citrix	Exin	Huawei	Legato	Nortel	See-Beyond	Vmware
CIW	ExtremeNetworks	Hyperion	Lotus	Novell	Google	

and many others.. See complete list [Here](#)

