

Examcollection

<http://www.ipass4sure.com/examcollection.htm>



<http://www.ipass4sure.com>

050-691

Novell

Advanced Novell Network Management ; Netware 6.5

<http://www.ipass4sure.com/exams.asp?examcode=050-691>

The 050-691 practice exam is written and formatted by Certified Senior IT Professionals working in today's prospering companies and data centers all over the world! The 050-691 Practice Test covers all the exam topics and objectives and will prepare you for success quickly and efficiently. The 050-691 exam is very challenging, but with our 050-691 questions and answers practice exam, you can feel confident in obtaining your success on the 050-691 exam on your FIRST TRY!

Novell 050-691 Exam Features

- Detailed questions and answers for 050-691 exam
- Try a demo before buying any Novell exam
- 050-691 questions and answers, updated regularly
- Verified 050-691 answers by Experts and bear almost 100% accuracy
- 050-691 tested and verified before publishing
- 050-691 examcollection vce questions with exhibits
- 050-691 same questions as real exam with multiple choice options

Acquiring Novell certifications are becoming a huge task in the field of I.T. More over these exams like 050-691 exam are now continuously updating and accepting this challenge is itself a task. This 050-691 test is an important part of Novell certifications. We have the resources to prepare you for this. The 050-691 exam is essential and core part of Novell certifications and once you clear the exam you will be able to solve the real life problems yourself. Want to take advantage of the Real 050-691 Test and save time and money while developing your skills to pass your Novell 050-691 Exam? Let us help you climb that ladder of success and pass your 050-691 now!

DEMO EXAM

For Full Version visit

<http://www.ipass4sure.com/allexams.asp>

QUESTION 1

Which RAID levels can be implemented with NSS? (Choose 2.)

- A. 0
- B. 1
- C. 2
- D. 3
- E. 4
- F. 5
- G. 6
- H. 7

Answer: A,B

QUESTION 2

Which method allows you to increase the amount of storage space on a server without adding more storage devices?

- A. Overbook the storage pool.
- B. Increase the size of the storage pool.
- C. Decrease the size of the storage pool.
- D. Recreate the partitions that a storage pool contains.

Answer: A

QUESTION 3

Your NetWare 6.5 server has been assigned the DNS name of da1.da.com. Which URL would you use in a browser window to access the iMonitor service on this server?

- A. <http://da1.da.com:8009/nds-summary>
- B. <http://da1.da.com:8009/edir-summary>
- C. <https://da1.da.com:8009/nds-summary>
- D. <https://da1.da.com:8008/nds-summary>
- E. <https://da1.da.com:8009/edir-summary>
- F. <https://da1.da.com:8008/edir-summary>

Answer: C

QUESTION 4

You want to split your DATA volume at the DATA:\USERS subdirectory level to the VOL1 volume on DA1. DA1 is located in the .Contractors.DA container in the DA-TREE tree. Which command, when issued from the server console, will do this?

- A. VLMN SPLIT DATA:\USERS VOL1

- B. VOLMN SPLIT DATA:\USERS VOL1
- C. VLMN SPLIT DATA:\USERS VOL1 DA1.Contractors.DA.DA-TREE
- D. VLMN SPLIT DATA:\USERS VOL1 .DA1.Contractors.DA.DA-TREE.
- E. VOLMN SPLIT DATA:\USERS VOL1 .DA1.Contractors.DA.DA-TREE
- F. VOLMN SPLIT DATA:\USERS VOL1 .DA1.Contractors.DA.DA-TREE.

Answer: F

QUESTION 5

When a DFS junction is created, the VLDB assigns the junction a unique ID. Where is this unique ID stored? (Choose 2.)

- A. In the VLDB
- B. In ConsoleOne
- C. In the volume's ACL
- D. In the NetWare Registry
- E. In the server's eDirectory object
- F. In the volume's eDirectory object
- G. In the Registry of the client workstations

Answer: A,F

QUESTION 6

While installing the Branch Office Appliance software, you are prompted to save the configuration to a diskette that can be used later during the installation of other Appliances. If you choose to do so, what filename is the configuration saved under?

- A. AUTOEXEC.NCF
- B. AUTOLOAD.CNF
- C. AUTOLOAD.NBO
- D. NBOCONFIG.NCF
- E. NBOCONFIG.TXT
- F. AUTOCONFIG.NCF

Answer: C

QUESTION 7

While migrating a NetWare 5.1 server to NetWare 6.5 using a Windows 2000 Professional workstation with Novell Client 4.83 installed, the migration fails. Given that the destination server has Universal Password deployed, what is the cause of the problem?

- A. Universal Password requires Novell Client 4.9 or later.
- B. Windows 2000 isn't compatible with Universal Password.
- C. The Migration Wizard isn't compatible with Windows 2000 Professional.
- D. NMAS must be disabled on the Novell Client 4.83 to be compatible with Universal

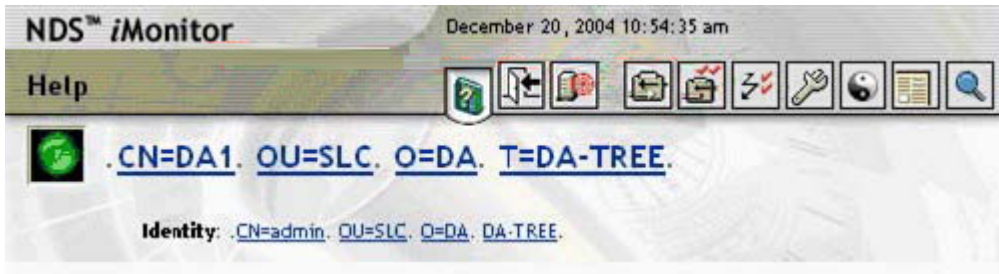
Password.

E. Novell Client 4.83 requires NCI 2.0.2 or later installed to be compatible with Universal Password.

Answer: A

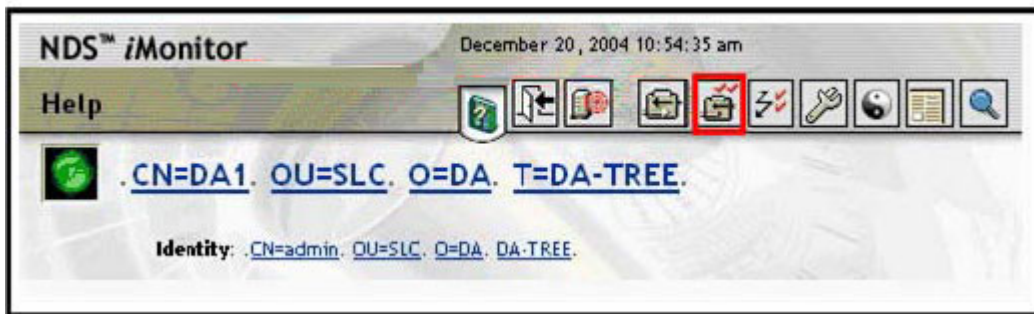
QUESTION 8

Exhibit:



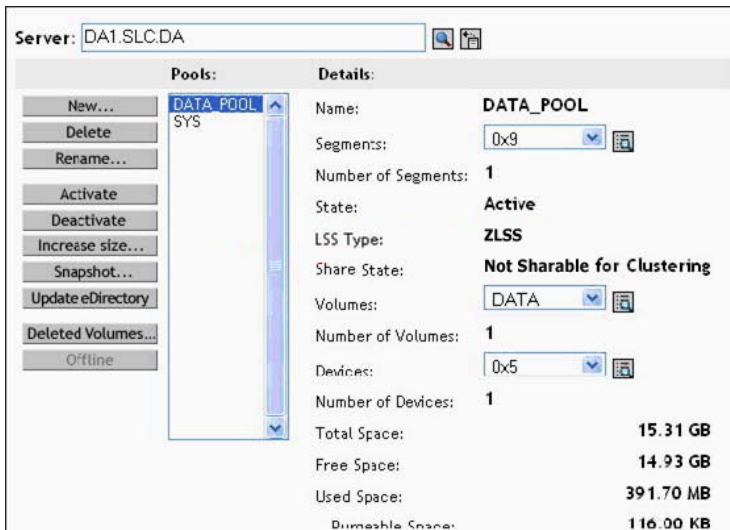
Click on the option that will allow you to check the version of eDirectory on a server.

Answer:

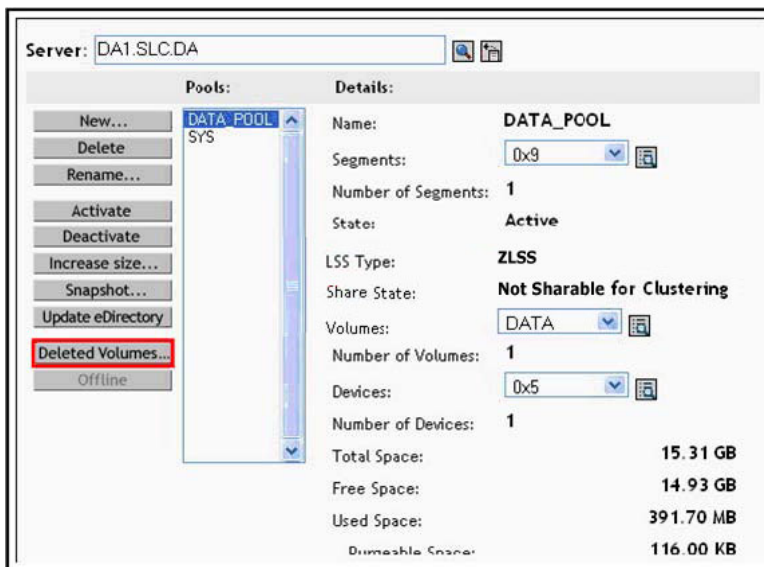


QUESTION 9

You need to restore an NSS logical volume that was deleted, but has not yet been purged.



Answer:



QUESTION 10

Assuming the CD drive in your workstation is assigned drive letter D, where is the installation file for the Server Consolidation Utility located?

- A. D:\NWSC.EXE
- B. D:\SERVCONS.EXE
- C. D:\TOOLS\NWSC.EXE
- D. D:\TOOLS\SERVCONS.EXE
- E. D:\PRODUCTS\SERVCONS\NWSC.EXE
- F. D:\PRODUCTS\SERVCONS\SERVCONS.EXE

Answer: E



Pass4sure Certification Exam Features;

- Pass4sure offers over **2500** Certification exams for professionals.
- More than **98,800** Satisfied Customers Worldwide.
- Average **99.8%** Success Rate.
- Over **120** Global Certification Vendors Covered.
- Services of **Professional & Certified Experts** available via support.
- Free **90 days** updates to match real exam scenarios.
- **Instant Download Access!** No Setup required.
- Price as low as **\$19**, which is 80% more **cost effective** than others.
- **Verified answers** researched by industry experts.
- Study Material **updated** on regular basis.
- Questions / Answers are downloadable in **PDF** format.
- Mobile Device Supported (**Android, iPhone, iPod, iPad**)
- **No authorization** code required to open exam.
- **Portable** anywhere.
- **Guaranteed Success.**
- **Fast**, helpful support **24x7**.



View list of All certification exams offered;
<http://www.ipass4sure.com/all exams.asp>

View list of All Study Guides (SG);
<http://www.ipass4sure.com/study-guides.asp>

View list of All Audio Exams (AE);
<http://www.ipass4sure.com/audio-exams.asp>

Download Any Certification Exam DEMO.
<http://www.ipass4sure.com/samples.asp>

To purchase Full version of exam click below;
<http://www.ipass4sure.com/all exams.asp>

3COM	CompTIA	Filemaker	IBM	LPI	OMG	Sun
ADOBE	ComputerAssociates	Fortinet	IISFA	McAfee	Oracle	Sybase
APC	CWNP	Foundry	Intel	McData	PMI	Symantec
Apple	DELL	Fujitsu	ISACA	Microsoft	Polycom	TeraData
BEA	ECCouncil	GuidanceSoftware	ISC2	Mile2	RedHat	TIA
BICSI	EMC	HDI	ISEB	NetworkAppliance	Sair	Tibco
CheckPoint	Enterasys	Hitachi	ISM	Network-General	SASInstitute	TruSecure
Cisco	ExamExpress	HP	Juniper	Nokia	SCP	Veritas
Citrix	Exin	Huawei	Legato	Nortel	See-Beyond	Vmware
CIW	ExtremeNetworks	Hyperion	Lotus	Novell	Google	

and many others.. See complete list [Here](#)

