

# **Examcollection**

<http://www.ipass4sure.com/examcollection.htm>



<http://www.ipass4sure.com>

# 050-665

## Novell

*GroupWise 6 Administration*

<http://www.ipass4sure.com/exams.asp?examcode=050-665>

The 050-665 practice exam is written and formatted by Certified Senior IT Professionals working in today's prospering companies and data centers all over the world! The 050-665 Practice Test covers all the exam topics and objectives and will prepare you for success quickly and efficiently. The 050-665 exam is very challenging, but with our 050-665 questions and answers practice exam, you can feel confident in obtaining your success on the 050-665 exam on your FIRST TRY!

### Novell 050-665 Exam Features

- Detailed questions and answers for 050-665 exam
- Try a demo before buying any Novell exam
- 050-665 questions and answers, updated regularly
- Verified 050-665 answers by Experts and bear almost 100% accuracy
- 050-665 tested and verified before publishing
- 050-665 examcollection vce questions with exhibits
- 050-665 same questions as real exam with multiple choice options

Acquiring Novell certifications are becoming a huge task in the field of I.T. More over these exams like 050-665 exam are now continuously updating and accepting this challenge is itself a task. This 050-665 test is an important part of Novell certifications. We have the resources to prepare you for this. The 050-665 exam is essential and core part of Novell certifications and once you clear the exam you will be able to solve the real life problems yourself. Want to take advantage of the Real 050-665 Test and save time and money while developing your skills to pass your Novell 050-665 Exam? Let us help you climb that ladder of success and pass your 050-665 now!

# **DEMO EXAM**

For Full Version visit

<http://www.ipass4sure.com/allexams.asp>

**QUESTION: 1**

What is the correct command to load the GroupWise 6 GWPOA.NLM with the ACCT.POA startup file on your NetWare server?

- A. NGWPOA -ACCT.POA
- B. GWPOA @ACCT.POA
- C. GWPOA.NLM -ACCT.POA
- D. load GWPOA /ACCT.POA
- E. load GPOA /s ACCT.POA

**Answer: B**

**QUESTION: 2**

A resource is a physical asset that can be checked out or scheduled. You can check a resources availability with a busy search. When creating a GroupWise resource, you must assign an owner who makes scheduling and allocation decisions. Which is a prerequisite when assigning an owner?

- A. A resource owner cannot own any other objects.
- B. A resource must be in the same container as the resource owner.
- C. A resource must be in the same post office as the resource owner.
- D. A resource must be in the same domain as the resource owner, but it can be in a different post office.
- E. It makes no difference where the owner and resource objects are located as long as they are defined in the system and are visible in the address book.

**Answer: C**

**QUESTION: 3**

What WebAccess installation provides the most security?

- A. A one-server solution
- B. A two-server solution
- C. A one-to-many server solution
- D. A single WebAccess installation
- E. Multiple WebAccess installations

**Answer: B**

**QUESTION: 4**

When you delete an eDirectory user who has a GroupWise account, you are prompted to identify what attributes to delete. Which options can you use if the NetWare user and the GroupWise object are no longer used? (Choose 3.)

- A. Delete External Entity
- B. Delete GroupWise Alias
- C. Delete eDirectory Account
- D. Delete GroupWise Account
- E. Expire GroupWise Account
- F. Delete GroupWise Nickname

**Answer:** C, D, E

**QUESTION: 5**

When configuring the WebAccess Agent Properties page in ConsoleOne, what is the default name for the SNMP Community "Get" String field?

**Answer:** PUBLIC

**QUESTION: 6**

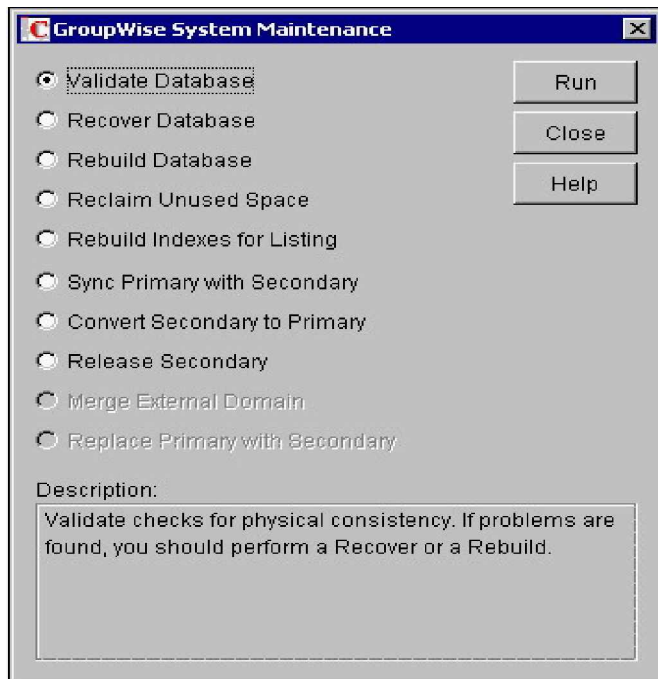
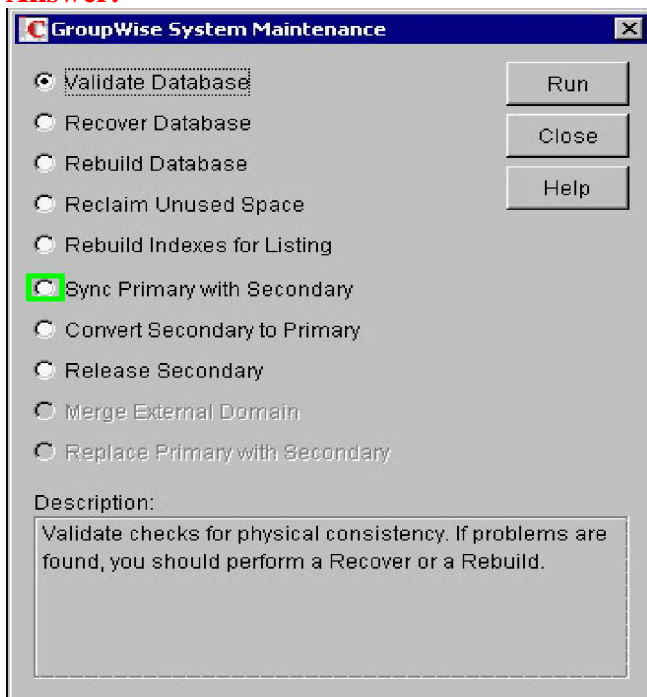
Your system consists of several domain sites linked to a hub domain. There is a gateway link to a remote site consisting of several directly linked domains. What type of link configuration is this?

- A. Star
- B. Ring
- C. Mesh
- D. Direct
- E. Hybrid
- F. Indirect

**Answer:** E

**QUESTION: 7**

Perform the following point and click task. Begin by clicking the Point-and-Click button. When you finish, continue to the next question by clicking the Next button. On the displayed graphic, click on the option you would select in GroupWise System Maintenance when the Primary Domain database contains out-of-date information about a secondary domain?

**Answer:****QUESTION: 8**



## Pass4sure Certification Exam Features;

- Pass4sure offers over **2500** Certification exams for professionals.
- More than **98,800** Satisfied Customers Worldwide.
- Average **99.8%** Success Rate.
- Over **120** Global Certification Vendors Covered.
- Services of **Professional & Certified Experts** available via support.
- Free **90 days** updates to match real exam scenarios.
- **Instant Download Access!** No Setup required.
- Price as low as **\$19**, which is 80% more **cost effective** than others.
- **Verified answers** researched by industry experts.
- Study Material **updated** on regular basis.
- Questions / Answers are downloadable in **PDF** format.
- Mobile Device Supported (**Android, iPhone, iPod, iPad**)
- **No authorization** code required to open exam.
- **Portable** anywhere.
- **Guaranteed Success.**
- **Fast**, helpful support **24x7**.



View list of All certification exams offered;  
<http://www.ipass4sure.com/all exams.asp>

View list of All Study Guides (SG);  
<http://www.ipass4sure.com/study-guides.asp>

View list of All Audio Exams (AE);  
<http://www.ipass4sure.com/audio-exams.asp>

Download Any Certification Exam DEMO.  
<http://www.ipass4sure.com/samples.asp>

To purchase Full version of exam click below;  
<http://www.ipass4sure.com/all exams.asp>

3COM	CompTIA	Filemaker	IBM	LPI	OMG	Sun
ADOBE	ComputerAssociates	Fortinet	IISFA	McAfee	Oracle	Sybase
APC	CWNP	Foundry	Intel	McData	PMI	Symantec
Apple	DELL	Fujitsu	ISACA	Microsoft	Polycom	TeraData
BEA	ECCouncil	GuidanceSoftware	ISC2	Mile2	RedHat	TIA
BICSI	EMC	HDI	ISEB	NetworkAppliance	Sair	Tibco
CheckPoint	Enterasys	Hitachi	ISM	Network-General	SASInstitute	TruSecure
Cisco	ExamExpress	HP	Juniper	Nokia	SCP	Veritas
Citrix	Exin	Huawei	Legato	Nortel	See-Beyond	Vmware
CIW	ExtremeNetworks	Hyperion	Lotus	Novell	Google	

and many others.. See complete list [Here](#)

