

Examcollection

<http://www.ipass4sure.com/examcollection.htm>



<http://www.ipass4sure.com>

050-663

Novell

Integrating Novell eDirectory and Active Directory

<http://www.ipass4sure.com/exams.asp?examcode=050-663>

The 050-663 practice exam is written and formatted by Certified Senior IT Professionals working in today's prospering companies and data centers all over the world! The 050-663 Practice Test covers all the exam topics and objectives and will prepare you for success quickly and efficiently. The 050-663 exam is very challenging, but with our 050-663 questions and answers practice exam, you can feel confident in obtaining your success on the 050-663 exam on your FIRST TRY!

Novell 050-663 Exam Features

- Detailed questions and answers for 050-663 exam
- Try a demo before buying any Novell exam
- 050-663 questions and answers, updated regularly
- Verified 050-663 answers by Experts and bear almost 100% accuracy
- 050-663 tested and verified before publishing
- 050-663 examcollection vce questions with exhibits
- 050-663 same questions as real exam with multiple choice options

Acquiring Novell certifications are becoming a huge task in the field of I.T. More over these exams like 050-663 exam are now continuously updating and accepting this challenge is itself a task. This 050-663 test is an important part of Novell certifications. We have the resources to prepare you for this. The 050-663 exam is essential and core part of Novell certifications and once you clear the exam you will be able to solve the real life problems yourself. Want to take advantage of the Real 050-663 Test and save time and money while developing your skills to pass your Novell 050-663 Exam? Let us help you climb that ladder of success and pass your 050-663 now!

DEMO EXAM

For Full Version visit

<http://www.ipass4sure.com/allexams.asp>

QUESTION 1:

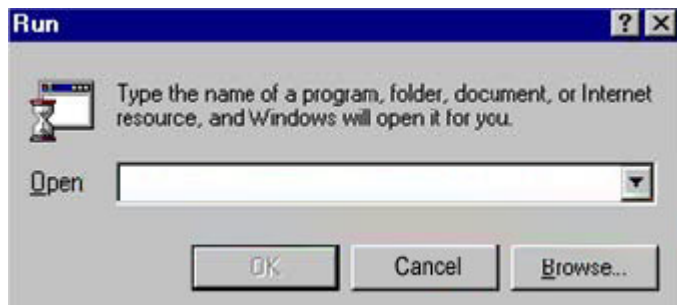
Which groups are created by default when a Windows 2000 server is installed?
(Choose 3.)

- A. Users
- B. Guests
- C. Backup Operators
- D. Domain Operators
- E. Network Operators
- F. Server Administrators

Answer: A, B, C

QUESTION 2:

You would like to run the default Microsoft Management Console. Enter the command that you would use in the Open box to start this utility.



Answer: mmc

QUESTION 3:

Which statements about Windows 2000 native mode are true? (Choose 2.)

- A. Native mode allows backward compatibility.
- B. After you make the switch to native mode, it cannot be undone.
- C. After you make the switch to native mode, you can switch back to mixed mode at any time.
- D. You can switch to native mode if there are Windows NT domain controllers within the domain.
- E. Native mode allows you to take advantage of all features and capabilities of Active Directory.

Answer: B, E

QUESTION 4:

Your network environment includes 1 Windows 2000 server, 5 Windows 2000 workstations, 5 Macintosh computers, and 2 printers. You need to share company records that are stored on the server. Which file system would you choose during a Windows 2000 Server installation?

- A. HPFS
- B. NTFS
- C. OS/2
- D. FAT-16
- E. FAT-32

Answer: B

QUESTION 5:

What is the primary mechanism supporting the Kerberos v5 protocol?

- A. Key Generation Center
- B. Key Distribution Center
- C. Ticket Granting Service
- D. Key Distribution Control
- E. Mutual Authentication Center

Answer: B

QUESTION 6:

What is required before eDirectory can be installed on Windows 2000? (Choose 2.)

- A. NTFS
- B. ConsoleOne
- C. eDirectory manager
- D. SLP Directory agent
- E. Administrative rights

Answer: A, E

QUESTION 7:

Which objects displayed in ConsoleOne can be modified and allow you to add eDirectory users to an Active Directory group? (Choose 2.)

- A. Group

- B. Server
- C. Organization
- D. eDirectory User
- E. Organizational Unit

Answer: A, D

QUESTION 8:

Which are features of Windows 2000 Advanced Server? (Choose 2.)

- A. It supports up to 4 GB RAM.
- B. It supports multiple processors.
- C. It provides clustering technologies.
- D. It supports Windows 95 device drivers.
- E. It supports RAID technology for software virus protection.

Answer: B, C

QUESTION 9:

When would Windows 2000 Server be a good choice over Windows 2000 Professional? (Choose 2.)

- A. When a web server is needed
- B. When Terminal services are needed
- C. When plug-and-play support is needed
- D. When local security for files is needed
- E. When multiple processors exist in a machine

Answer: A, B

QUESTION 10:

Which statement defines the Windows 2000 Advanced Server term "scaling up"?

- A. An increase in accessibility of a server via the LAN
- B. Increasing the client access license count for a server
- C. Distributing the load of network requests through server technology
- D. The increased performance and capacity gained by adding processors and memory to a server

Answer: D

QUESTION 11:



Pass4sure Certification Exam Features;

- Pass4sure offers over **2500** Certification exams for professionals.
- More than **98,800** Satisfied Customers Worldwide.
- Average **99.8%** Success Rate.
- Over **120** Global Certification Vendors Covered.
- Services of **Professional & Certified Experts** available via support.
- Free **90 days** updates to match real exam scenarios.
- **Instant Download Access!** No Setup required.
- Price as low as **\$19**, which is 80% more **cost effective** than others.
- **Verified answers** researched by industry experts.
- Study Material **updated** on regular basis.
- Questions / Answers are downloadable in **PDF** format.
- Mobile Device Supported (**Android, iPhone, iPod, iPad**)
- **No authorization** code required to open exam.
- **Portable** anywhere.
- **Guaranteed Success.**
- **Fast**, helpful support **24x7**.



View list of All certification exams offered;
<http://www.ipass4sure.com/allexams.asp>

View list of All Study Guides (SG);
<http://www.ipass4sure.com/study-guides.asp>

View list of All Audio Exams (AE);
<http://www.ipass4sure.com/audio-exams.asp>

Download Any Certification Exam DEMO.
<http://www.ipass4sure.com/samples.asp>

To purchase Full version of exam click below;
<http://www.ipass4sure.com/allexams.asp>

3COM	CompTIA	Filemaker	IBM	LPI	OMG	Sun
ADOBE	ComputerAssociates	Fortinet	IISFA	McAfee	Oracle	Sybase
APC	CWNP	Foundry	Intel	McData	PMI	Symantec
Apple	DELL	Fujitsu	ISACA	Microsoft	Polycom	TeraData
BEA	ECCouncil	GuidanceSoftware	ISC2	Mile2	RedHat	TIA
BICSI	EMC	HDI	ISEB	NetworkAppliance	Sair	Tibco
CheckPoint	Enterasys	Hitachi	ISM	Network-General	SASInstitute	TruSecure
Cisco	ExamExpress	HP	Juniper	Nokia	SCP	Veritas
Citrix	Exin	Huawei	Legato	Nortel	See-Beyond	Vmware
CIW	ExtremeNetworks	Hyperion	Lotus	Novell	Google	

and many others.. See complete list [Here](#)

