

Examcollection

<http://www.ipass4sure.com/examcollection.htm>



<http://www.ipass4sure.com>

050-649

Novell

TCP IP for Networking Professionals

<http://www.ipass4sure.com/exams.asp?examcode=050-649>

The 050-649 practice exam is written and formatted by Certified Senior IT Professionals working in today's prospering companies and data centers all over the world! The 050-649 Practice Test covers all the exam topics and objectives and will prepare you for success quickly and efficiently. The 050-649 exam is very challenging, but with our 050-649 questions and answers practice exam, you can feel confident in obtaining your success on the 050-649 exam on your FIRST TRY!

Novell 050-649 Exam Features

- Detailed questions and answers for 050-649 exam
- Try a demo before buying any Novell exam
- 050-649 questions and answers, updated regularly
- Verified 050-649 answers by Experts and bear almost 100% accuracy
- 050-649 tested and verified before publishing
- 050-649 examcollection vce questions with exhibits
- 050-649 same questions as real exam with multiple choice options

Acquiring Novell certifications are becoming a huge task in the field of I.T. More over these exams like 050-649 exam are now continuously updating and accepting this challenge is itself a task. This 050-649 test is an important part of Novell certifications. We have the resources to prepare you for this. The 050-649 exam is essential and core part of Novell certifications and once you clear the exam you will be able to solve the real life problems yourself. Want to take advantage of the Real 050-649 Test and save time and money while developing your skills to pass your Novell 050-649 Exam? Let us help you climb that ladder of success and pass your 050-649 now!

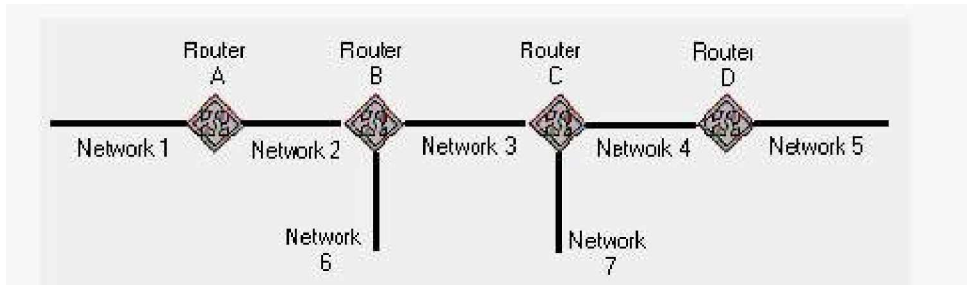
DEMO EXAM

For Full Version visit

<http://www.ipass4sure.com/allexams.asp>

QUESTION: 1

Examine the graphic below. Router C uses RIP and has split horizon enabled. Which cost metric does Router C advertise on Network 3 regarding Network 6?



- A. 2
- B. 3
- C. 4
- D. 15
- E. 16
- F. Router C does not advertise routes for Network 6 over Network 3.

Answer: F

QUESTION: 2

What does TFTP use to maintain data packet order?

- A. Pointers
- B. Sequence numbers
- C. Acknowledgements
- D. Fixed-length packets
- E. A single data packet

Answer: C

QUESTION: 3

What TCP/IP protocol allows users to remotely access a system as if they were directly connected to the remote machine? (Enter the acronym only.)

Answer: TELNET

QUESTION: 4

Perform the drag-and-drop task. Begin by clicking the Drag-and-Drop button. When you

finish, continue to the next question by clicking the Next button. The graphic shows the steps for data exchange between a server and a requesting client application using the TCP protocol. Two steps are already in place. Arrange the remaining steps in the correct order by dragging each step to the correct location.

Steps	Order
TCP uses the sequence numbers to reorder and combine the datagrams.	The server sends the data to the requesting application.
TCP splits the data stream into segments.	Place step 2 here
IP header information is removed and the IP datagrams are passed to TCP.	Place step 3 here
TCP acknowledges receipt of each datagram.	Place step 4 here
The logical addresses for the source and destination are added to each segment.	Place step 5 here
The client data link layer receives frames and passes its data to the IP layer.	Place step 6 here
	Place step 7 here
	The data is received by the requesting application.

Answer:

Steps	Order
TCP uses the sequence numbers to reorder and combine the datagrams.	The server sends the data to the requesting application.
TCP splits the data stream into segments.	TCP splits the data stream into segments.
IP header information is removed and the IP datagrams are passed to TCP.	The logical addresses for the source and destination are added to each segment.
TCP acknowledges receipt of each datagram.	The client data link layer receives frames and passes its data to the IP layer.
The logical addresses for the source and destination are added to each segment.	IP header information is removed and the IP datagrams are passed to TCP.
The client data link layer receives frames and passes its data to the IP layer.	TCP acknowledges receipt of each datagram.
	TCP uses the sequence numbers to reorder and combine the datagrams.
	The data is received by the requesting application.

QUESTION: 5

How many keys are used for public-key encryption? (Enter a number.)

Answer: 2

QUESTION: 6

Which mechanisms can be used to obtain a dynamic IP address? (Choose 3.)

- A. DNS
- B. ARP
- C. DHCP
- D. RARP
- E. ICMP
- F. PING
- G. BOOTP

Answer: C, D, G

QUESTION: 7

What symptom can occur on a network when clients are configured with an incorrect subnet mask?

- A. Clients ARP for remote devices.
- B. Dynamic route entries are added unnecessarily.
- C. Clients cannot obtain an IP address using DHCP.
- D. Routers send ICMP port unreachable messages for remote devices.

Answer: A

QUESTION: 8

Which steps are part of the TCP/IP error resolution process? (Choose 2.)

- A. List all operating systems in use.
- B. Examine the communication process.
- C. Begin capturing all network packets.
- D. Identify the possible points of failure.

Answer: B, D

QUESTION: 9

Your company uses the IP address 168.212.0.0 with subnets 168.212.64.0 and 68.212.128.0. What is the appropriate subnet mask for your company?

- A. 255.255.0.0
- B. 255.255.128.0
- C. 255.255.192.0
- D. 255.255.224.0
- E. 255.255.255.0
- F. 255.255.255.128
- G. 255.255.255.192
- H. 255.255.255.224

Answer: C

QUESTION: 10

Which tool do you use to determine active processes on a host?

- A. ROUTE
- B. PING/TPING
- C. TRACEROUTE
- D. Port scanner

Answer: D

QUESTION: 11

When do RIP routers advertise their routing information?

- A. Every 30 seconds
- B. Every 60 seconds
- C. Anytime a change occurs
- D. When a request for information is received

Answer: A

QUESTION: 12

Which routing configuration provides a method for explicitly defining the next hop from a router to a particular destination?

- A. Static
- B. Dynamic
- C. Directed
- D. Link state
- E. Distance vector

Answer: A

QUESTION: 13

What class of IP address is shown below? 33.4.71.222

- A. Class A
- B. Class B
- C. Class C
- D. Class D
- E. Class E

Answer: D

QUESTION: 14

How often does an OSPF router rebuild its routing table information?

- A. Every 30 seconds
- B. Every 60 seconds
- C. Every five minutes
- D. Every hour
- E. At a predetermined interval
- F. Only when a change occurs

Answer: F

QUESTION: 15

Examine the graphic below.

Router B uses RIP and has poison reverse enabled. Which cost metric does Router B advertise on Network 2 regarding Network 7?



Pass4sure Certification Exam Features;

- Pass4sure offers over **2500** Certification exams for professionals.
- More than **98,800** Satisfied Customers Worldwide.
- Average **99.8%** Success Rate.
- Over **120** Global Certification Vendors Covered.
- Services of **Professional & Certified Experts** available via support.
- Free **90 days** updates to match real exam scenarios.
- **Instant Download Access!** No Setup required.
- Price as low as **\$19**, which is 80% more **cost effective** than others.
- **Verified answers** researched by industry experts.
- Study Material **updated** on regular basis.
- Questions / Answers are downloadable in **PDF** format.
- Mobile Device Supported (**Android, iPhone, iPod, iPad**)
- **No authorization** code required to open exam.
- **Portable** anywhere.
- **Guaranteed Success.**
- **Fast**, helpful support **24x7**.



View list of All certification exams offered;
<http://www.ipass4sure.com/all exams.asp>

View list of All Study Guides (SG);
<http://www.ipass4sure.com/study-guides.asp>

View list of All Audio Exams (AE);
<http://www.ipass4sure.com/audio-exams.asp>

Download Any Certification Exam DEMO.
<http://www.ipass4sure.com/samples.asp>

To purchase Full version of exam click below;
<http://www.ipass4sure.com/all exams.asp>

3COM	CompTIA	Filemaker	IBM	LPI	OMG	Sun
ADOBE	ComputerAssociates	Fortinet	IISFA	McAfee	Oracle	Sybase
APC	CWNP	Foundry	Intel	McData	PMI	Symantec
Apple	DELL	Fujitsu	ISACA	Microsoft	Polycom	TeraData
BEA	ECCouncil	GuidanceSoftware	ISC2	Mile2	RedHat	TIA
BICSI	EMC	HDI	ISEB	NetworkAppliance	Sair	Tibco
CheckPoint	Enterasys	Hitachi	ISM	Network-General	SASInstitute	TruSecure
Cisco	ExamExpress	HP	Juniper	Nokia	SCP	Veritas
Citrix	Exin	Huawei	Legato	Nortel	See-Beyond	Vmware
CIW	ExtremeNetworks	Hyperion	Lotus	Novell	Google	

and many others.. See complete list [Here](#)

