

Examcollection

<http://www.ipass4sure.com/examcollection.htm>



<http://www.ipass4sure.com>

000-606

IBM

*IBM WebSphere Business Modeler Advanced Edition V7.0
Business Analysis and Design*

<http://www.ipass4sure.com/exams.asp?examcode=000-606>

The 000-606 practice exam is written and formatted by Certified Senior IT Professionals working in today's prospering companies and data centers all over the world! The 000-606 Practice Test covers all the exam topics and objectives and will prepare you for success quickly and efficiently. The 000-606 exam is very challenging, but with our 000-606 questions and answers practice exam, you can feel confident in obtaining your success on the 000-606 exam on your FIRST TRY!

IBM 000-606 Exam Features

- Detailed questions and answers for 000-606 exam
- Try a demo before buying any IBM exam
- 000-606 questions and answers, updated regularly
- Verified 000-606 answers by Experts and bear almost 100% accuracy
- 000-606 tested and verified before publishing
- 000-606 examcollection vce questions with exhibits
- 000-606 same questions as real exam with multiple choice options

Acquiring IBM certifications are becoming a huge task in the field of I.T. More over these exams like 000-606 exam are now continuously updating and accepting this challenge is itself a task. This 000-606 test is an important part of IBM certifications. We have the resources to prepare you for this. The 000-606 exam is essential and core part of IBM certifications and once you clear the exam you will be able to solve the real life problems yourself. Want to take advantage of the Real 000-606 Test and save time and money while developing your skills to pass your IBM 000-606 Exam? Let us help you climb that ladder of success and pass your 000-606 now!

DEMO EXAM

For Full Version visit

<http://www.ipass4sure.com/allexams.asp>

QUESTION: 1

Which steps would a process analyst take when conducting a simulation of "what-if" scenarios for a business process instance?

- A. Make a copy of the simulation snapshot, rename it, change the attributes for the "what-if" scenario and re-run the simulation and analyze the results
- B. Make a copy of the simulation profile, rename it, change the simulation attributes for the "what-if" scenario and re-run the simulation and analyze the results.
- C. Right click on the simulation profile, select Profile Analysis > New Profile and change the attributes for the "what-if" scenario and then re-run the simulation and analyze results
- D. Right click on the simulation snapshot, select Profile Analysis > Profile Specification, and change the attributes for the "what-if" scenario and then re-run the simulation and analyze results.

Answer: B

QUESTION: 2

A process analyst has completed a process model and is required to validate it. One of the validations is to ensure that there are no potential situations where a sequence of activities can be repeated indefinitely. Using Static Analysis, how can the process analyst quickly validate that there are no sequence of tasks that can potentially loop endlessly?

- A. 1. Run the Path Cycles Report.
2. Identify the cycle name assigned to each path cycle in the process and correlate that back to the process model.
- B. 1. Run the Activity Throughput Report.
2. Identify the throughput of all activities that deliver more outputs per hour than anticipated.
- C. 1. Run the Activities Unable to Start Report.
2. Identify any activities that were not able to be invoked within the process, locate the preceding construct that connects a downstream activity's output to an upstream activity's input.
- D. 1. Run the Paths Unable to be Followed Report.
2. Identify any paths that were not able to be invoked within the process, and locate the preceding construct that connects a downstream activity's output to an upstream activity's input.

Answer: A

QUESTION: 3

A process analyst runs a simulation that yields inaccurate results. Which analysis would a process analyst use to identify looping paths in the process?

- A. Path Cycles
- B. Activity Throughput
- C. Activities Unable to Start
- D. Paths Unable to be Followed

Answer: A

QUESTION: 4

A process analyst is simulating a process and the results indicate excessive wait times at some of the activities. Which static analysis report would be useful in determining the cause of the excessive wait times?

- A. Activities by organization
- B. Activity cost and duration
- C. Activity resource and role leveling
- D. Qualified resources for role

Answer: C

QUESTION: 5

A process analyst is performing "What-If" analysis upon a process model using simulation. Work can arrive into the process at anytime. It has been observed that the 5 defined Field Technician resources have significant resource shortage durations. The process analyst assumes that making more Field Technician resources available to the process would decrease the shortage duration. Based on this assumption, the analyst increases the available resources to 10. Subsequent simulations do not show significant reduction in the resource shortage durations. What steps should the process analyst take to resolve the resource shortage duration and make updates for further process improvement?

- A. Increase the available resources for the Field Technician from 10 to 20 to reduce the resource shortage duration.
- B. Reallocate the defined Field Technicians to additional second shift and weekend shift availability to remove resource shortage duration due to unavailability overnight and during weekends.
- C. Increase the time interval within the simulation snapshot settings to spread out the arrival of tokens, allowing more time for the Field Technician to complete work before new work arrives, thereby reducing resource shortage durations.

D. Decrease the Resource Time Required for activities assigned to the field Technicians, allowing them to spend less time on tasks and be able to address more activities in a given interval, thereby reducing resource shortage durations.

Answer: B

QUESTION: 6

A process analyst has completed a future state process model and needs to validate it against process improvement requirements. The future state process must be able to handle 25% more throughput than the current state, while maintaining or improving process duration. Presently, the business process handles 2000 requests daily. Using dynamic analysis, how can the process analyst validate whether the future state process will satisfy these requirements?

- A. 1. Simulate the current state process model at 2000 requests per day.
2. Simulate the future state process model at 2000 requests per day.
3. Generate a Processes Duration Comparison report to verify the Average Elapsed Duration of the future state process model reflects a favorable percentage change over the current state process model.
- B. 1. Simulate the current state process model at 2000 requests per day.
2. Simulate the future state process model at 2500 requests per day.
3. Generate a Processes Duration Comparison report to verify the Average Elapsed Duration of the future state process model reflects a favorable percentage change over the current state process model.
- C. 1. Simulate the current state process model at 2500 requests per day.
2. Simulate the future state process model at 2500 requests per day.
3. Generate a Processes Duration Comparison report to verify the Average Elapsed Duration of the future state process model reflects a favorable percentage change over the current state process model.
- D. 1. Simulate the future state process model at 2000 requests per day.
2. Simulate the future state process model at 2500 requests per day.
3. Generate a Processes Duration Comparison report upon the results of the future state process model to verify the Average Elapsed Duration.

Answer: B

QUESTION: 7

A new payment process will be used to process transfer requests in the US and Europe where: 1) payments should be processed on the same day of request Monday to Friday. 2) the number of European and US requests is similar per day during normal working hours. Which option illustrates the input simulation setting that will help analyze this process?

- A. Set a time trigger to receive requests assigning as start time a general timetable valid for the US and Europe.
- B. Set a time trigger to receive requests using a distribution with a general timetable for the US and Europe.
- C. Set a timetable trigger to receive requests assigning a general timetable valid for the US and Europe.
- D. Set a timetable trigger to receive requests assigning a custom timetable specifying different periods for the US and Europe.

Answer: D

QUESTION: 8

A loan business process has an activity that has a role and a resource assigned. The role cost is \$100 and the resource cost is \$200. When the process is simulated what is the activity total cost?

- A. The role cost (\$100).
- B. The resource cost (\$200).
- C. The sum of role and resource cost (\$300).
- D. The role cost multiplied by the activity duration.

Answer: B

QUESTION: 9

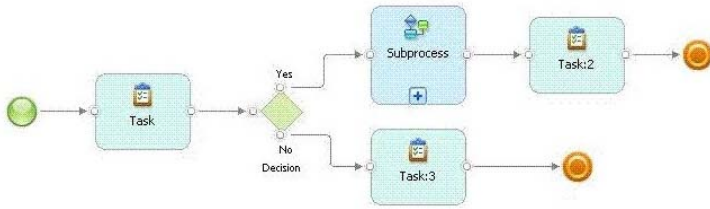
A process analyst needs to conduct analysis on cost and duration of marketing related tasks in the current process. In the current process, there are five possible paths. The process analyst needs to identify the cost and duration of marketing related tasks for each path. The process analyst has decided to create a classifier of Marketing to be assigned to the tasks in the current process. Which analysis should be used?

- A. Activities by classifier analysis.
- B. Classifier cost and duration analysis.
- C. Process case summary analysis.
- D. Process classifier cost and duration analysis.

Answer: D

QUESTION: 10

Refer to the Exhibit.



A process analyst needs to simulate the behavior of the whole business process. How should the simulation profile be set to accomplish this requirement?

- A. Set the simulation to Evaluate all sub processes.
- B. Set the Maximum number of process invocation to 10.
- C. Set the simulation to Use resource time required as a task processing time.
- D. Set the date of the Process availability ends greater than the Process availability begins.

Answer: A

QUESTION: 11

A company's new approach to selling requires extensive resource planning. A team of process analysts has been assembled to perform this work. Which option is sufficient to enforce consistent simulation behavior across the team? All analysts:

- A. set the same random number seed and process availability start and end dates in the simulation profiles.
- B. set the same random number seed, process availability start and end dates, and maximum simulation duration in the simulation profiles.
- C. set unique random number seed, process availability start and end dates, maximum simulation duration and maximum number of process invocations in the simulation profiles.
- D. set unique random number seeds and process availability start and end dates in the simulation profiles.

Answer: A

QUESTION: 12

When reviewing the simulation results, the process analyst discovered that for each task in the process that has multiple output criteria, the simulation engine would make a random selection of an output path, and generate outgoing tokens for each output defined in the output criterion. Which of the following settings was used during the simulation?



Pass4sure Certification Exam Features;

- Pass4sure offers over **2500** Certification exams for professionals.
- More than **98,800** Satisfied Customers Worldwide.
- Average **99.8%** Success Rate.
- Over **120** Global Certification Vendors Covered.
- Services of **Professional & Certified Experts** available via support.
- Free **90 days** updates to match real exam scenarios.
- **Instant Download Access!** No Setup required.
- Price as low as **\$19**, which is 80% more **cost effective** than others.
- **Verified answers** researched by industry experts.
- Study Material **updated** on regular basis.
- Questions / Answers are downloadable in **PDF** format.
- Mobile Device Supported (**Android, iPhone, iPod, iPad**)
- **No authorization** code required to open exam.
- **Portable** anywhere.
- **Guaranteed Success.**
- **Fast**, helpful support **24x7**.



View list of All certification exams offered;
<http://www.ipass4sure.com/allexams.asp>

View list of All Study Guides (SG);
<http://www.ipass4sure.com/study-guides.asp>

View list of All Audio Exams (AE);
<http://www.ipass4sure.com/audio-exams.asp>

Download Any Certification Exam DEMO.
<http://www.ipass4sure.com/samples.asp>

To purchase Full version of exam click below;
<http://www.ipass4sure.com/allexams.asp>

3COM	CompTIA	Filemaker	IBM	LPI	OMG	Sun
ADOBE	ComputerAssociates	Fortinet	IISFA	McAfee	Oracle	Sybase
APC	CWNP	Foundry	Intel	McData	PMI	Symantec
Apple	DELL	Fujitsu	ISACA	Microsoft	Polycom	TeraData
BEA	ECCouncil	GuidanceSoftware	ISC2	Mile2	RedHat	TIA
BICSI	EMC	HDI	ISEB	NetworkAppliance	Sair	Tibco
CheckPoint	Enterasys	Hitachi	ISM	Network-General	SASInstitute	TruSecure
Cisco	ExamExpress	HP	Juniper	Nokia	SCP	Veritas
Citrix	Exin	Huawei	Legato	Nortel	See-Beyond	Vmware
CIW	ExtremeNetworks	Hyperion	Lotus	Novell	Google	

and many others.. See complete list [Here](#)

